



NAME		
GARAGE BAR		
STREET		
700 East Market Street		
CITY	STATE	ZIP
Louisville	Ky	40202



## FACT SHEET

### LOCATION

Garage Bar is housed in a former auto service garage in downtown Louisville's vibrant East Market District. Also called "NuLu," the walkable neighborhood is known for its art galleries, specialty shops and other locally-owned hotspots.

### HISTORY

700 East Market has returned to its roots. Documents dating back to 1918 show the corner of downtown originally housed the Caster Chas saloon. Today, you can enjoy the touch of throw back and order from a selection of eclectic draft and bottled craft brews or over 30 Kentucky Bourbon and rye whiskeys.

### OPENED

June 2011

### OPERATORS

Richard Sible, Executive Chef  
Tony Creed, General Manager

Capacity: 98 indoors, 75 patio, 200+ beer garden

Tables: 2 long tables, seating 12 or 16

Bars: 2 bars, seating 10 or 6

Booths: 10

Restrooms: 2 indoor, 1 outdoor

### SPACE HIGHLIGHTS

Garage Bar is open daily with select lunch and brunch hours as well as extended summer hours. Seasonally, the outdoor space is available for private parties.

- Ping Pong
- Fire Pits (seasonal)
- Picnic Tables
- Cornhole
- Outdoor Bar
- Outdoor Restroom

### ABOUT GARAGE BAR

The casual neighborhood spot features pizzas from a wood-fired brick oven, country ham, freshly shucked oysters and a rotating selection of Southern-inspired snacks and specialties with an emphasis on fresh, local ingredients. With a nod to the building's historic roots as a saloon, Garage Bar serves up a list of seasonal cocktails, bottled and draft craft beers, and of course- lots of Kentucky Bourbon.

Garage Bar is managed by 21c Museum Hotels, the award-winning, Louisville, Kentucky-based boutique hotel and restaurant group. 21c Museum Hotels was founded by contemporary art collectors and preservationists Laura Lee Brown and Steve

Wilson. Much more than just places to spend the night, 21c hotels are inventive unions of genuine hospitality, thoughtful design and culinary creativity—all anchored by contemporary art museums. Visit [21cmuseumhotels.com](http://21cmuseumhotels.com) to learn more about 21c Museum Hotels' portfolio of hotels and restaurants across the country.



# MENUS

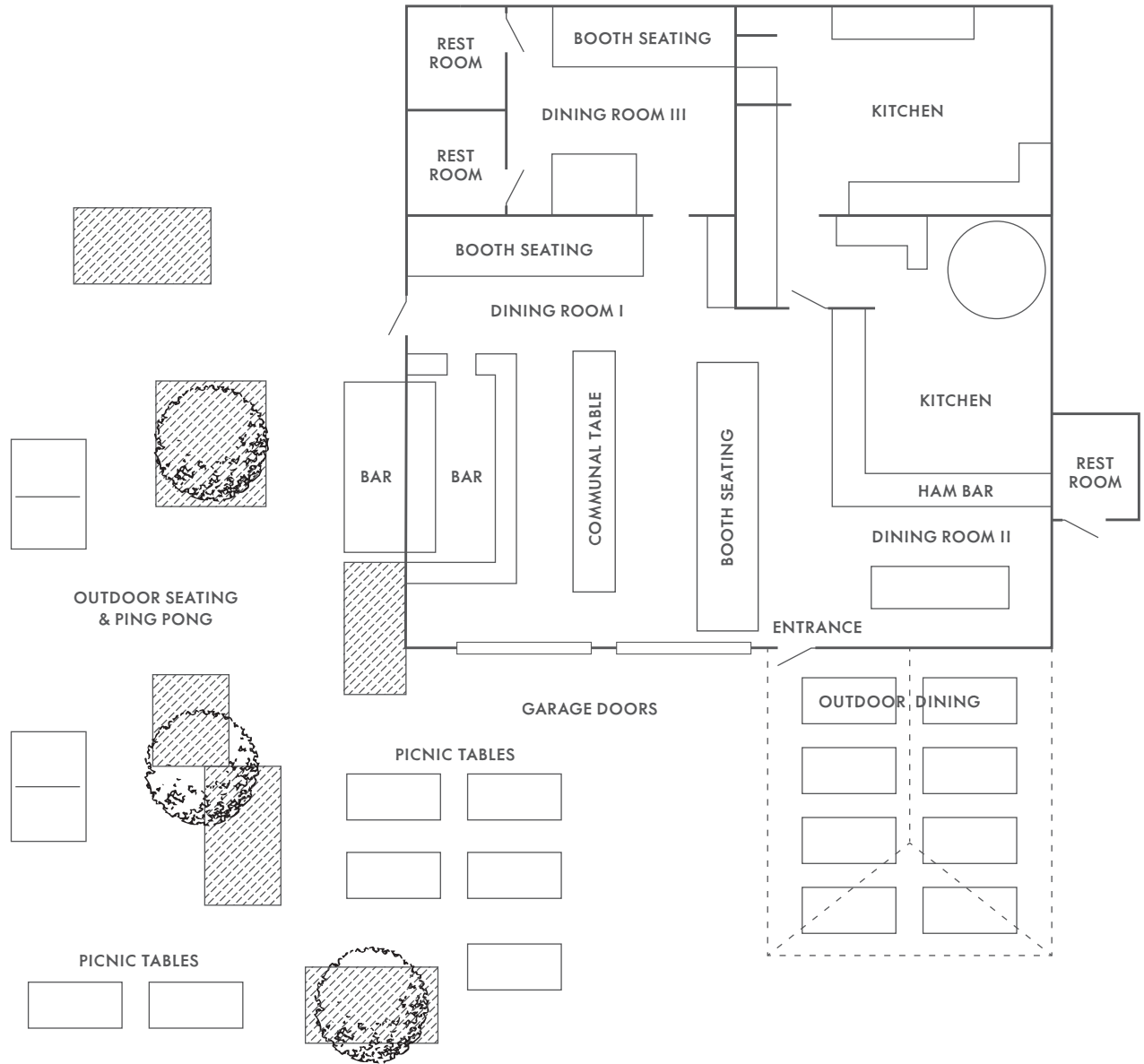
How does a Bourbon or craft beer tasting sound before or after your ping pong or cornhole game? Our staff will work with you to customize your event to your heart's desire. With great food and a great setting, Garage Bar is the perfect place to host your next meeting or event.

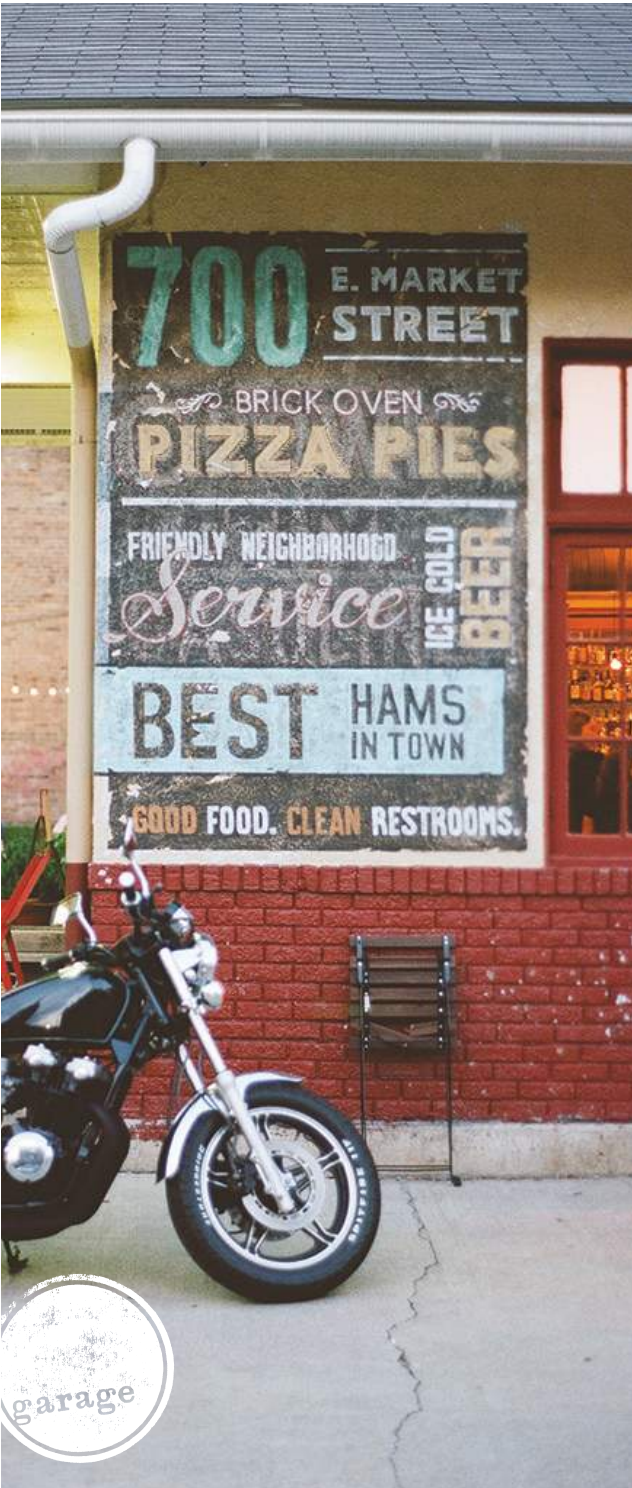
We are a farm-to-table restaurant and menu items are subject to seasonal availability. Menus are fully customizable and can be accommodated for special requests or dietary restrictions.





# FLOOR PLAN





## ART AT GARAGE BAR

While the exterior of the building was minimally changed, we couldn't resist some works of art.



### MONICA MAHONEY

Local artist Monica Mahoney was commissioned to paint a large sign on the building and the resulting mural is a now-recognizable part of the Clay Street façade. Mahoney also created the face for the bar, the ham bar, and the ping pong tables, which are made from crushed cars.

### JONATHAN SCHIPPER:

#### SLOW INEVITABLE DEATH OF AMERICAN MUSCLE

The sculpture, a machine that advances two full sized automobiles slowly into one another over a period of time, simulates a head on automobile collision. Each car moves slowly and almost imperceptibly toward the other towards an inevitable collision. The Slow Inevitable Death of American Muscle acts as a commentary on our interest and excitement in action films, which often feature at least one spectacular automobile wreck. Cars reflect our own personalities and egos; when we see an automobile destroyed, in a way we are looking at our own destruction. But these action packed moments are also invisible because of their inherent speed. Schipper's work offers the viewer the ability to examine in three dimensions the collision of two cars. A moment that might take a fraction of a second in an actual collision will be expanded into days or months. By changing one of the key variables (speed) what was life threatening is now rendered almost static, allowing contemplation of our own mortality.

